

# NEWSLETTER

Wentworth Avenue | 01492 531 260 | [swyddfa@penybryn.conwy.sch.uk](mailto:swyddfa@penybryn.conwy.sch.uk)  
Colwyn Bay, LL29 6DD

Dear Parents / Annwyl Rieni

Thank you to those who were able to come along to the Friends of the School AGM this week. If you weren't able to make it but would like to offer your support for future events etc you can contact the Friends on [friendsatysgolpyb@gmail.com](mailto:friendsatysgolpyb@gmail.com) As well as the popular Facebook page the Friends are also posting on Instagram using [@friendsatysgolpyb](https://www.instagram.com/friendsatysgolpyb)

All the children brought home a flyer this week which the mini police designed following the work they had done last year on parking around the school. As always please be mindful of where you park, especially at the end of the day, as you know the roads can become very congested when people park inconsiderately.

Finally, a reminder that midday next Friday is the deadline to submit a nomination form regarding the parent governor vacancy we have.

I hope you all have a nice weekend.

Yours sincerely / Yn gywir,  
Mr Richard Monteiro  
Headteacher



## *Classroom Call - 1TE*

We have thoroughly enjoyed exploring our new classroom, practical area and 'garden'. One of the favourite games played in the 'garden' is using the balance equipment to avoid the 'lava'. In the practical area we have been exploring wet and dry sand, and played with the small world house. Our topic this half term is based on the theme 'This is me'. This has given us the opportunity to draw self-portraits on the iPads, and to paint a picture of our family.



## Other News

### Pre-Nursery, Nursery and Reception

We currently have availability in our Pre-Nursery, Nursery and Reception classes for September 2025 intake. Please contact the school office for more information.

### Halloween Discos

Please see the attached flyer for the Friends of Ysgol Pen-y-Bryn's Halloween Discos on Thursday 24th October.

### Free Wood

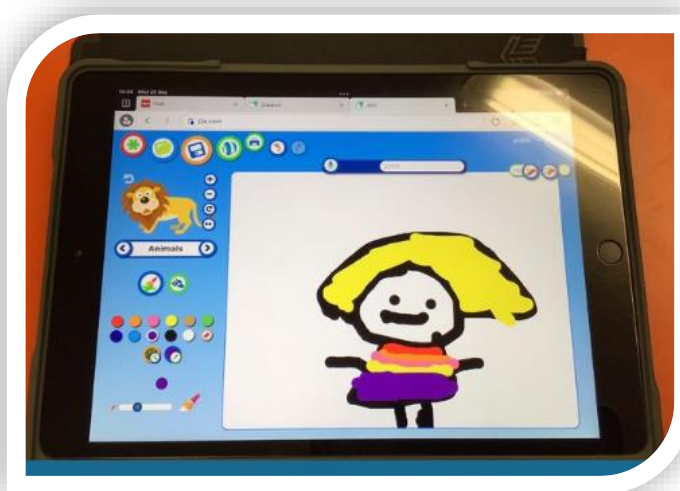
The Friends have kindly arranged for a new wooden playhouse for reception to replace the old one which has become damaged over the years. A lot of the wood on the old house is still in good condition, if you would like to come and collect this please let the office know before the end of next week after which it will be disposed of.

### Punctuality

We are experiencing an increase in number of late arrivals in a morning. Please can we remind everyone the importance of arriving to school on time each day. Junior morning register is called at 8.45am and Infants morning register is called at 8.55am.

During our indoor PE sessions we have been moving using different parts of our bodies touching the floor. It has been a great time to practise our Welsh vocabulary, e.g. pen-head, traed-feet, dwylo-hands. In Maths we have been looking for numbers on our shoes and used tiles to 'measure' our hands.

We are looking forward to continuing with our topic. We will be looking at Picasso's paintings of faces and hopefully this will inspire us to create our own.



### Attendance for last week

Attendance (1 day = 20% ½ day = 10%)

	100%	90%	80%	70% or less
Number of pupils	353	8	32	35

We are aiming for all our pupils to achieve an average of **97%** attendance a year (6 days absence).

Dates for your diary	Week beginning 14 <sup>th</sup> Oct	17 <sup>th</sup> & 18 <sup>th</sup> October	24 <sup>th</sup> October	12 <sup>th</sup> Nov
	Parent Pop in Evenings	Tempest Photo's	Halloween Discos	Flu Nasal Spray Rec-Yr6