

NEWSLETTER

Wentworth Avenue | 01492 531 260 | swyddfa@penybryn.conwy.sch.uk
Colwyn Bay, LL29 6DD

Dear Parents / Annwyl Rieni

I hope you had a nice week last week as we return to school for the second half of the Spring term.

During the half term break a lot of work on the Resource Base was completed and the enclosed outdoor area for Year 2 has also gone up, thank you to the Friends of the School for funding this. The Friends are also organising an outdoor tidy up day for Saturday 15th March (more details to follow about how you can support this). It was nice to see so many of you at the various Parents evenings this week, if you were unable to make your appointment and would like to rearrange please inform your child's class teacher.

There were some great costumes across the school on World Book Day from Aladdin and Harry Potter to Fantastic Mr Fox and The Far Away Tree along with some great classroom activities planned by the teachers to celebrate a variety of authors and stories.

Finally, I hope all the children who are on residential trips next week have a great time, the weather forecast is looking good and I'm sure the staff at Pentre and the Conway Centre will be taking full advantage and planning lots of outdoor activities.

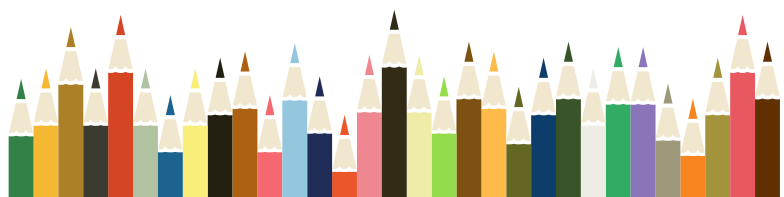
Yours sincerely / Yn gywir,
Mr Richard Monteiro
Headteacher



Classroom Call - RLH

This week begins a new and exciting half term in RLH. Last term the children made their own pizza's from scratch, this term they have chosen to make shortbread biscuits. They're definitely turning into little 'chefs'.

Their enthusiasm and attitude to learning continues to thrive and everyone was excited to welcome our visitors 'Animal Encounters', who gave us an amazing talk about all the animals they brought with them. We had rabbits, guinea pigs,



Clerk to the Governors

Pen-y-Bryn's Governing Body is still in need of a clerk. If you or someone you know would be interested in this please get in touch with the school. Information about our Governing Body can be found [here](#)

Criw Cymraeg

Please find attached Criw Cymraeg's weekly flyer.

e- Safety

Google Family Link is an app which, once installed on yours and your child's phones, allows you to set screen time limits, approve apps your child wants to download, as well as block inappropriate content.

Donations

Please can we ask for any kind donations of boxed tissues for use in your child's class.

Child minding service

Please find attached flyer.

geckos, a tarantula, and many more. Our class absolutely loved learning about them and even handled them. What a brilliant experience. Mango the huge snake!



Attendance for last week

Attendance (1 day = 20% ½ day = 10%)

	100%	90%	80%	70% or less
Number of pupils	359	8	40	25

We are aiming for all our pupils to achieve an average of **97%** attendance a year (6 days absence).

Dates for
your
diary

10th Mar
YR 3 Explore
Wrexham
YR5 Ysgol
Erias

11th Mar
Infant
Eisteddfod

11-14th Mar
YR 3 & 4
Residential
Conway
Centre

13-14th Mar
YR 2
Residential
Pentre